
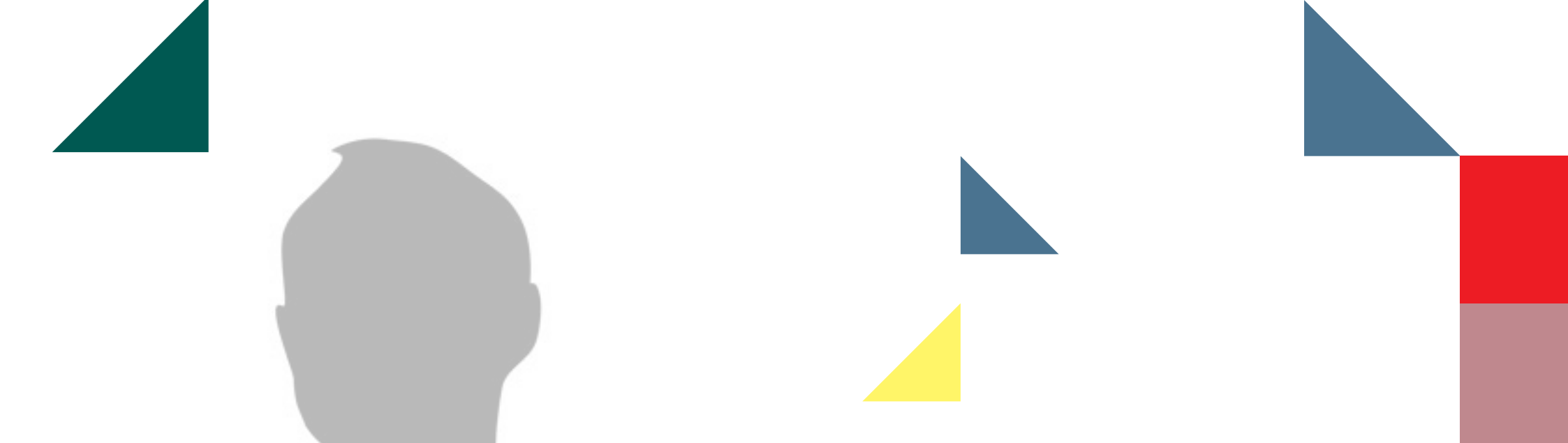


المجموعة الثالثة | كونتكتس
معماريون | مهندسون | مدراء مشاريع



3G | CONTECTS

Architects | Engineers | Project / Construction Managers



Our mastermind concentrated and focused efforts are dedicated to assist our clients to achieve their goals and missions by combining creativity, innovation, advanced technology, and proven processes.

Dr. Mohamed Khalil Najjar, AIA NCARB, MBA
Chairman and CEO



Where to Find Us



USA

5419 Marina Club Drive
Wilmington, NC 28409
Tel: +1(910) 859-4161
Operational Inquiry
Dr. MK Najjar
mknajjar@3g-contacts.com

UAE - Abu Dhabi

Office 401, Al-Khaily Tower, Salam St.,
PO Box 94197, Abu Dhabi, UAE
Tel: +(9712) 679 6885
Operational Inquiry
Khalel Ismail
khalel.ismail@3g-contacts.com

UAE - Dubai

Office 908, IT Plaza building, Dubai Silicon
Oasis, Dubai
Tel: +(9715) 474 19991
Operational Inquiry
Awni Najjar
awni.najjar@3g-contacts.com

Jordan

66 Isam Al-Ajlouni St. Suite 1
P.O. Box 950362-11195
Tel: +(9626) 562 2237
Operational Inquiry
Ramiz Abu Mahfouz
ramiz.abumahfouz@3g-contacts.com

KSA

Mamar Al-Hammami, Behind Old Aqaria
Building, Siteen Street, Al-Zahra, Al-Malaz
Tel: +(96611) 478 7935
Operational Inquiry
Ramiz Abu Mahfouz
ramiz.abumahfouz@3g-contacts.com

Corporate Overview

Commitment to Customer Value through Innovation

3G | Contects was founded to provides the highest quality engineering and project/construction management services across a range of industries including industrial, healthcare, education, commercial, and residential projects.

the Clean Energy Division of 3G | Contects provides services in solar and Nuclear Energy. We have completed over 15 solar projects totalling over 400 M.W. of solar power, making 3G | Contects the largest solar consultant in the MENA region

We create value by working closely and often partnering with our customers to reduce redundancies, increase quality, and maximize client satisfaction

We are present and working in various world countries with projects in the USA, United Arab Emirates, Kingdom of Saudi Arabia, Jordan, Malaysia, and Oman

Our team has won several design competitions and received many international awards in recognition of its value, quality, and customer satisfaction.



Century Quality ERA Award



UAEU EXPO 2020 PAVILION 1st Prize Award



OMINVEST Recommendation letter

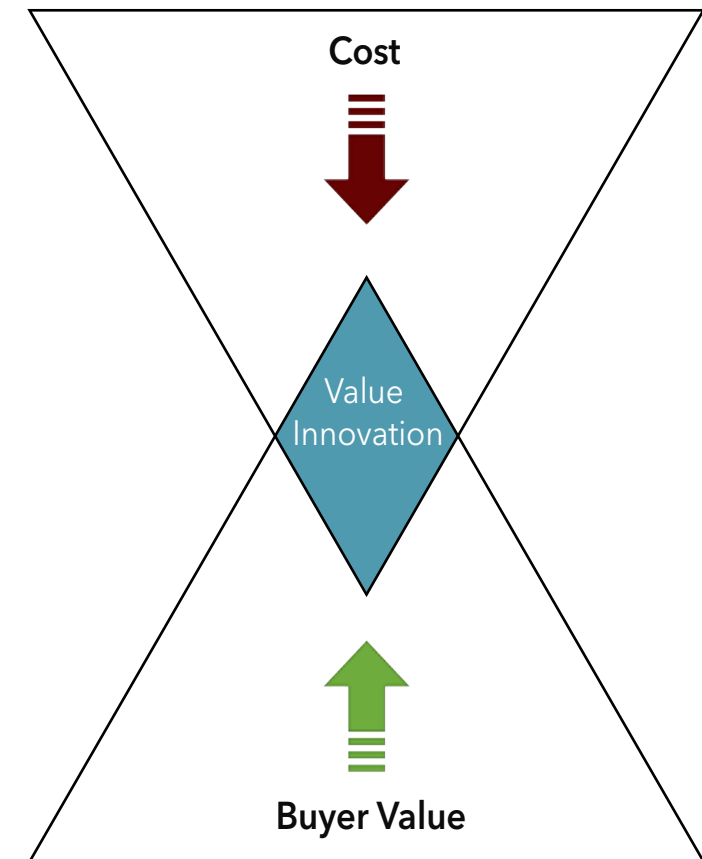
Corporate Overview

3G | Contects Value Proposition

3G | Contects and its leadership adopts a blue ocean strategy to all aspects of business, corporate, and client relations to create value where others would overlook. A team of consistent, reliable, and knowledgeable professionals work smart and hard to ensure that the value added by 3G | Contects is maximized and to consistently exceed our customers' expectations.

Business Philosophy and Approach

- ▲ Provide "Value Through Innovation"
- ▲ Raise Clients' Value and Reduce Cost
- ▲ Implement a Blue Ocean Strategy (ERRC)



Why Hire and Partner with 3G | Contects?

Effective

- ▶ Provide total integrated solutions of our services. We select and hire appropriate and prequalified resources and sub-consultants for services that we don't provide in-house;
- ▶ Skilled and fully experienced in architecture, engineering, project and construction management, and design - build (one-stop-shop);
- ▶ Responsive to customers, project and market specific needs;
- ▶ Identify requirements at early stage, plan well, then execute well the first time and consistently; and
- ▶ Complete all requirements to pre-identified and contracted quality standards, as well as to budgeted and scheduled commitments.
- ▶ Ethical: 3G | Contects will never compromise on ethics. We adopt high standards in ethical conduct and abide by all applicable law including the US Foreign Corrupt Practices Act (FCPA)
- ▶ Excellence: 3G | Contects consistently strives to excellence through proper planning, effective execution, and continuous improvement.

Efficient

Work smart and hard; to complete tasks to highest safety and quality standards, within budget, and allowed schedule;

Frugal; therefore, we are protective of our customers' resources accordingly;

Reliable; therefore, we get repeat customers and increase business volume;

Transparent; therefore, our dealings are always based on win-win and partnering arrangements with our customer projects' teams;



Executive Statement

Vision and Mission

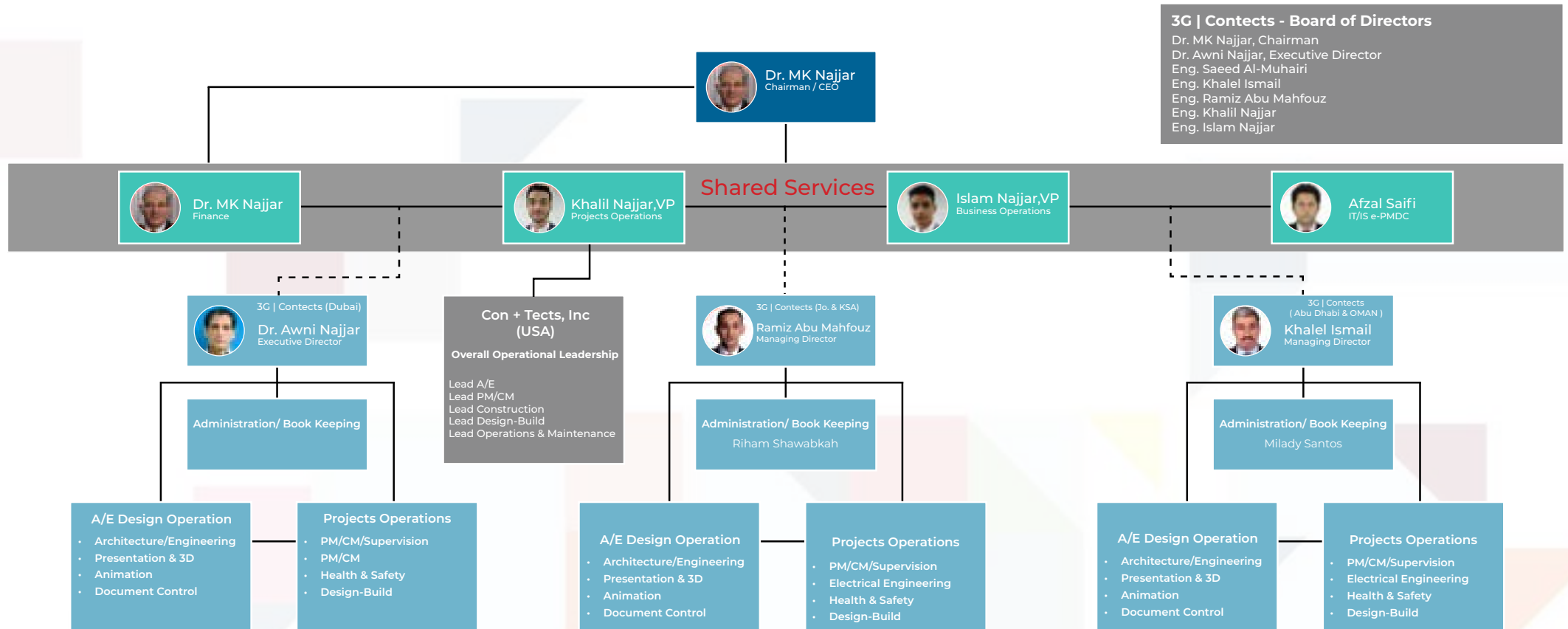
Our Vision

- ▲ Remain the premier multinational firm providing innovative total integrated solutions, performance standards and value services that exceed our customers and partners expectations.

Our Mission

- ▲ Collaborate with our customers, the entire project team, and the community to deliver optimum services.
- ▲ Maintain design and construction excellence, systems integration, and commitment to the safety, sustainability and preservation of resources.
- ▲ Promote an innovative and creative environment to best align ourselves with our customers' goals in a healthy and safe work place.
- ▲ Do it once and right the first time to ensure our customers' expectations are met and/or exceeded.
- ▲ Make strides and concentrated effort that we conduct our business in a fair, ethical, and transparent manner.
- ▲ Relentlessly pursue innovative approaches in every step of performing our services.
- ▲ Ensure economic viability and ROI for our customers, shareholders, and investors alike.

Organization Structure



Quality Policy

This Policy documents outlines 3G|Contects leadership and management commitment to the development and implementation of the 3G|Contects-quality program. 3G is certified to ISO 9001:2008 Quality Management standard system and has quality guidelines and processes in place to ensure that risks and environmental impacts are minimized and that safety, reliability and performance standards are maximized through the application of effective management control systems. These control systems will commensurate with the risks posed by the projects, operations or the services provided.

All 3G | Contects staff are responsible for compliance with the requirements established by our QA/QC processes and manual. The responsibility and authority for the attainment of quality also reside with each staff member.

It is the responsibility of all 3G | Contects staff, through the concept of employee empowerment, to provide work practices, goals, and staff interactions that promote an environment where communication is open, barriers to performance are identified and corrected and a safer and more productive workplace exists.

3G | Conetcts staff have the obligation and organizational freedom to identify and report to management any current or potential deficiency that may have a detrimental impact on quality, safety, and cost or schedule so that appropriate corrective action may be initiated. Contractors who furnish materials, equipment, labor, and services and who are working within the scope of the quality program must reflect 3G programs and practices.

3G | Contects Quality program and procedures are also designed to promote quality products that meet client expectations in a cost-effective and efficient manner. This is accomplished by tailoring individual Project Quality Plans and using the work processes that are in place to eliminate inefficiencies and unnecessary documentation. 3G | Conetcts Quality engineers and specialists are trained in developing Quality Plans that accomplish the programmatic requirements without excessive steps and duplication.

Health, Safety, and Environmental (HSE) Policy

A Commitment to Balance

As an Architecture, Engineering, Project/ Construction/ Development Management, Technical Services and Design - Build firm, 3G leadership, management, and all staff are always committed to maintaining a healthy and safe working environment at all of its offices and project locations.

3G | Contects safety and health program is based on an integration of the US Occupational, Safety and Health Association (OSHA) and the local applicable procedures and requirements. The program enforces the most strict local governing safety and health Codes and requirements as the principles guiding our commitment to safety.

3G | Contects will take all necessary actions to meet or exceed the applicable occupational health and safety requirements, and will continuously monitor and improve operations, procedures and technologies to promote and maintain a safe and healthy working environment.

- ▲ Health and safety are our highest priority at 3G | Contects.
- ▲ 3G | Contects team is committed to protect and preserve the environment for the new generations.
- ▲ 3G | Contects team is committed to designing sustainable, healthy and safe environments.
- ▲ 3G | Contects executive management will lead the continuous safety improvement process.
- ▲ Safety is everyone's responsibility in 3G | Contects.
- ▲ Safety performance is key indicator of our organizational excellence and always incorporated into our business processes.
- ▲ 3G | Contects will communicate safety performance openly with its staff.
- ▲ 3G | Contects staff are given the knowledge, skills and training necessary to safely perform their jobs.
- ▲ 3G | Contects staff are instructed to act proactively with regard to health and safety matters.

Services

A/E Design Phase Services

Through utilizing the latest technologies including BIM for A/E designs approach and our proprietary e-PMDC system, 3G | Contexts provides.

- 1 - Project Feasibility
- 2 - Programming and Master Planning
- 3 - Preliminary & Schematic Design
- 4 - Design Development
- 5 - Construction Drawing
- 6 - Project Manual including:
 - Specifications and Bills of Materials (BOQs)
 - Invitation to bid
 - Bid form
 - Letter of Award form
 - Instruction to bidders
 - Sample of contract
- 7 - No Objection Certificates and building permits
- 8 - Budgeting/Cost Estimating
- 9 - Planning and Master Scheduling
- 10 - Constructibility Reviews
- 11 - Value Engineering Reviews

Bid/Tender Phase Services

- 1 - Prequalify Prospective Contractors
- 2 - Preparation and Distribution of Construction Bid Packages (RFP, RFQ, RFB)
- 3 - Pre-Bid Conferences and site visits
- 4 - Respond to RFIs
- 5 - Bid Analyses and Evaluation of Management, & Technical capabilities Experience, Past Performance, then make recommendations to customers for selection and price, then negotiation, and contract award
- 6 - Contracts Preparation, Negotiations, Management, and Execution and closeout

Construction Phase services

- 1 - Construction Supervision & Construction management at risk or for a fee
- 2 - Meetings and Status Reporting
- 3 - Submittals Tracking and Verifications
- 4 - Pay Requests & Invoices
- 5 - Master Scheduling & Reviews
- 6 - Cost/Budget Control
- 7 - Variations/Claims Reviews and Resolutions
- 8 - Health, Safety, and Environmental Compliance
- 9 - Document Control & Management
- 10 - Risk identification and mitigation.
- 11 - Design - Build services (Comprehensive Turn - Key services)

Project Closure Services

- 1 - As-Built Drawings
- 2 - Occupancy Permits
- 3 - Operations/Maintenance Manuals & Training
- 4 - Contract Close-Out and Lessons Learned

Concept Design

During Conceptual Design Phase, 3G consults with the client to determine project goals and requirements. Often this determines the program for the project. This design program is the term used to define the required functions of the project. It should include estimated areas of each usage type and any other elements that achieve the project goals.

Various systems shall be discussed with the client and the most appropriate practical and optimum solution shall be implemented. 3G | Contexts develops study drawings, documents, or other media that illustrate the concepts of the design and include spatial relationships, scale, and form for the owner to review. Schematic design is also the research phase of the project, when zoning requirements or jurisdictional restrictions are discovered and addressed. Furthermore, design concepts for the structural system, mechanical system like HVAC, plumbing and drainage, fire protections, electrical systems like power distribution, lighting levels, low current, fire detection, Telecommunication etc., shall be prepared, discussed with the client and approval obtained.

An outline specification/selection of finishing type for various areas shall be prepared and agreed with the client prior to proceeding with the works on schematic design (Basic Engineering).

Design concept report shall be prepared including order of magnitude cost estimate (to inaccuracy of $\pm 25\%$).

The conceptual design report shall include the following:

- ▲ Conceptual Design Drawings for Architecture;
- ▲ Building Perspectives & Optional Live Animation Video of building tour
- ▲ Interior Perspectives as sketches including presentation boards on color selection;
- ▲ Conceptual Design Report on Structural and MEP system with recommendations;
- ▲ Budgetary Estimate; and
- ▲ Master Schedule



▲ Schematic Design/Basic Engineering

upon approval of conceptual design drawings and design concept report by the client, the basic engineering design for architectural discipline shall be prepared. This shall include all architectural drawings as defined in the client's definition report, including all structural and MEP requirements and spaces identified.

Subsequent to client's approval on architectural design, the works on structural and MEP systems designs shall be started. The basic engineering design on structural and MEP shall include all drawings and documents defined in the client's definition report.

Preliminary cost estimate to an accuracy $\pm 15\%$ shall be prepared.

Conducting value engineering exercises and with the incorporation of basic engineering comments and value engineering conclusions shall be carried out during this stage.

This phase produces a final schematic design, to which the owner accepts after consultation and discussions with 3G | Contexts. Costs are estimated based on overall project components. The design then moves forward to the design development phase.

The Schematic Design often produces a site plan, floor plan(s), sections, elevations, and other illustrative materials; computer images, renderings, or models. Typically the drawings include overall dimensions, and a more accurate construction cost is estimated.

Note: The contract may actually spell out what is to be delivered during this or any other design phase.



Design Development

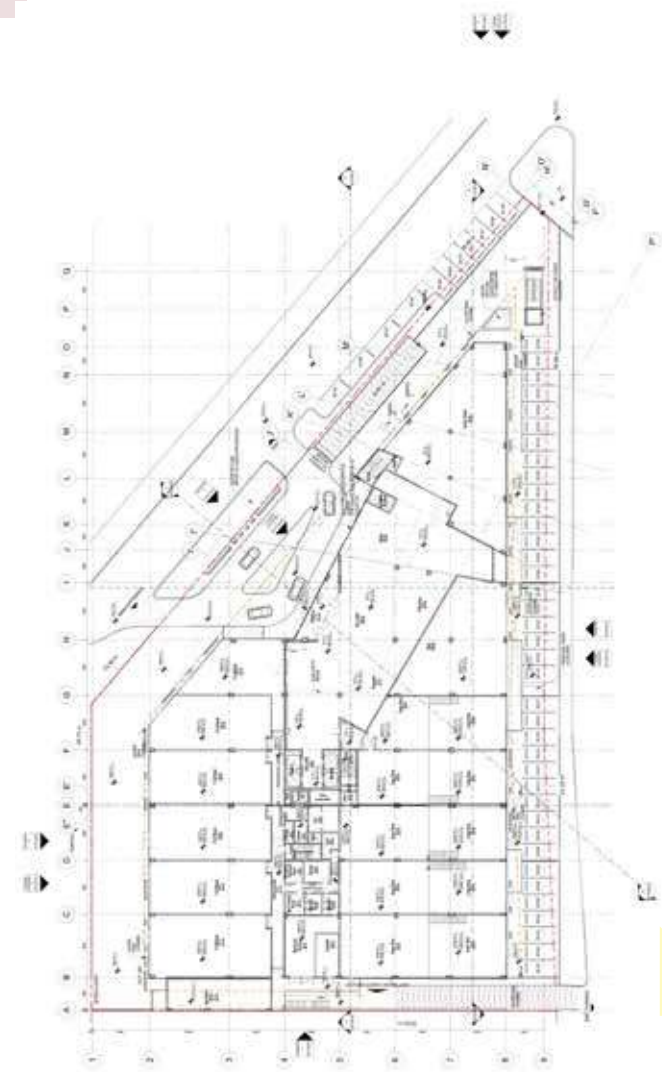
Design Development (DD) services use the basic design documents from the schematic phase and develops the design. This phase scope includes architectural, structural, mechanical, electrical, plumbing, fire protection, and miscellaneous details to comply with client and applicable building codes requirements, as well as outline specifications including selection of major building materials.

Upon approval of the schematic A/E design, and on conclusion of value engineering, the design development of architecture shall be carried out. Also the engineering of other disciplines like structure and MEP shall be carried out.

Typically referred to as DD, this phase results in drawings that often detail design elements such as material types and location of windows and doors. The level of detail provided in the DD phase is determined by the project requirements.

Deliverables: Design development often produces floor plans, general sections, wall sections and elevations with full dimensions. These drawings typically include door and window details, floor, wall and ceiling finishes and outline material specifications.

The outline specifications and semi-definitive cost estimate, shall all be part of the detailed engineering package in the following phase.



Detailed Design

The detailed engineering design shall include all documents and deliverables needed and all drawings and data's forming part of detailed engineering shall be produced in sufficient detail to enable the entire project to be constructed and commissioned without recourse to further design works. It is the process of taking on and developing the approved developed design.

By the end of the detailed design process, the design should dimensionally correct and coordinated, describing all the main components of the building and how they fit together. However, technical aspects of the design may require further development, design by specialists may not yet have been fully incorporated into the design and it will not have been packaged for tender.

Detailed design should provide sufficient information for applications for statutory approval to be made. Detailed design should include:

- ▲ Overall layout.
- ▲ Road layouts and landscape.
- ▲ Operational flows and departmental operational policies.
- ▲ Horizontal and vertical circulation routes.
- ▲ Schedules of accommodation.
- ▲ Identification of standard and non-standard room layouts.
- ▲ If appropriate, room data sheets.
- ▲ Building dimensions and gridlines.

- ▲ Architectural plans sections and elevations of buildings, parts of buildings and components, including:
 1. Block plans.
 2. Site plans and external works.
 3. Changes in floor levels.
 4. Expansion joints.
 5. Demarcation of changes to finishes.
 6. Reflected ceiling plans.
- ▲ Outline specification including schedules of components, defining the performance and/or material standards required (including colors).
- ▲ Elements of design that require specialist input or early choice of manufacturer. Designers should investigate suppliers' certificates, warranties and compliance with standards.
- ▲ Requirements for mock-ups, testing, samples or models necessary to satisfy performance or public relations requirements (including computer generated images).

Detailed Design

▲ Key assemblies, component drawings and schedules with special attention to junctions and interfaces between elements which will influence the structural or services designs or have an effect on the spatial allowances. Key details will include:

1. External walls, lining, cladding, glazing, windows and blinds.
2. Balconies, canopies and entrances.
3. Roofing and finishes, roof lights, drainage, gutters and outlets.
4. Floor constructions and finishes.
5. Staircases.
6. Damp proof courses.
7. Service duct and services plan enclosures.
8. Load bearing internal walls and partitions, including lifts and other shafts.
9. Non-load bearing partitions.
10. Ceiling construction and support.
11. Overall dimensions and fixing details for fixed equipment such as sanitary fittings and joinery.
12. Roads, paths, paving, boundaries and retaining walls.
13. External gradients and falls including gutters and outlets.
14. Components that can be standardized, mass produced or prefabricated, resulting in reduced costs or reduced construction durations.

▲ Initial schedules indicating:

1. Finishes.
2. Doors and ironmongery.
3. Sanitary fittings.
4. Room numbers and signage.

▲ Structural plans sections, elevations and specifications:

1. The location of all structural elements in relation to gridlines.
2. Dimensions and sizes of beams, columns, walls and slabs.
3. Sketch details of junctions and proposed fixings.
4. Superimposed loading allowances for each floor slab.
5. The proposed discipline for all holes giving range and sizes permissible.
6. An outline specification including total weights of reinforcement.
7. The detailed design should highlight any changes from the concept design and provide the services engineer with sufficient information to undertake the services design.

Detailed Design

▲ Building services plans, sections and elevations showing:

1. Plumbing and drainage (high and low level).
2. Ductwork.
3. Heavy pipework.
4. Electrical trunking.
5. Light pipework.
6. Electrical control wiring.
7. Radiators.
8. Plantroom layouts.
9. Riser drawings.
10. Access requirements and builders work in connection.

▲ Define phases if the project is to be phased. This can be complicated by items that appear in buildings intended for later phases, but that are required for the operation of earlier phases, for example boilers or escape stairs.

▲ Safety strategy

▲ Fire strategy, including:

1. Zoning and compartmentation.
2. Separation (such as fire resistance of compartments, restriction of openings between compartments and distances to boundaries).
3. Protected shafts (staircases and services).
4. Surface spread of flame and escape strategy (including travel distances and staircase widths).
5. Active measures such as detection, ventilation, alarms, sprinklers.
6. Minimum ventilation requirements where no mechanical ventilation is provided.

7. Dry riser and hose reels

8. Uninterrupted power supplies.

9. Fire rated cables.

▲ Acoustic separation and acoustic conditions (reverberation times, etc.).

▲ The use of materials and the potential for re-use, recycling and waste handling (see site waste management plan).

▲ Detailed cost plan showing the capital and lifecycle costs for all the components.

▲ Risk assessment including operational issues such as; lifts (goods / passenger / fire and other equipment that may require a lifting certificate and cleaning cradles), cleaning of atrium roofs and facade etc.

▲ Bidding and Negotiations

Tendering

The next phase is the preparation of the Construction Tender Documents (CTDs). Once the client and 3G are satisfied with the documents produced during DD, 3G | Contexts moves forward and produce drawings with greater detail. These drawings typically include specifications and bills of quantities for construction details and materials.

Once CTDs are satisfactorily produced, 3G | Contexts sends them to bidders for pricing or bidding. If the CTD set is not 100 percent complete, and floating the CTD is required because of time constraints, this is noted on the CTD set when it is sent out for bidding. This phase results in the bidder's final estimate of project costs.

Deliverables: The Construction Tender Document phase produces a set of drawings, bill of quantities (BOQ) and specifications that include all pertinent information required for the bidder to price and build the project.

Negotiations

The first step of this phase is preparation of the bid documents to go out to potential bidders for pricing. The bid documents set often includes an advertisement for bids, instructions to bidders, the bid form, bid documents, the owner-contractor agreement, proformas, and any other sections necessary for successful price bid. For some projects that have unique aspects or complex requirements, 3G | Contexts and the client elect to have a pre-bid meeting for potential bidders.

After bid sets are distributed, both the client and 3G | Contexts wait for bids to come in on a specified date and time, 3G | Contexts with the involvement of the client, evaluates the bids and recommends a winning bid. Any negotiation with the bidder of price or project scope, if necessary, should be done before the contract for construction is signed.

Deliverables: The final deliverable is a Construction Contract taking into consideration all tender bulletins, changes, additions, deletions, addenda, etc. Once this document is signed, project construction can begin.

Construction Phase Services

Contract Supervision (CS) services are rendered at the client's discretion and are outlined in the customer 3G | Contects agreement. different levels of services on 3G | Contects part. CS services begin with the initial construction contract (CC) and end when the final certificate of payment is issued.

3G | Contects core responsibility during this phase is to help the contractor to build the project as specified in the CC. Questions may arise on site that requires 3G to clarify architectural and engineering design. Drawings that offer additional clarification to finish the project properly may be necessary to be issued after releasing the Construction Contract. Different situations may Require 3G | Contects to issue a variation in the services to complete the porject.



Construction Phase Services

3G | Contacts extensive and comprehensive Project Management services are outlined as follows:

Project Integration

1. Build Project Knowledge
2. Develop Project Business Plan
3. Communicate Business Plan
4. Change Control and Management
5. Tools And Techniques

Scope Management

1. Planning and Definition of Scope
2. Scope Acceptance
3. Scope Change and Controls

Time Management

1. Time Schedules
2. Time Management Control Cycle

Cost Management

1. Feasibility Studies
2. Cost Schedules
3. Cost Management Control Cycle

Quality Management

1. Quality Management Structure
2. Best Practice
3. Continuous Improvement

Human Resource Management

1. Project Organization
2. Team Development
3. People Management
4. Conflict Resolution

Communications Management

1. Communication System
2. Information Processing
3. Performance Information

Risk Management

1. Risk Mitigation
2. Risk Control Cycle
3. Risk Control Tools

Procurement Management

1. Procurement Approach
2. Procurement Planning
3. Solicitations, Requisitions, and Contracts

Environmental Management

1. Environment Management Approach
2. Environmental Planning

Traffic Management

1. Traffic Management Approach
2. Traffic Management Planning

Certifications & Awards

3G | Contact's possesses award winning expertise and experience that reach across multiple specialties with US and ME board certified professional (AIAs and PEs) including but not limited to industrial, healthcare, education, commercial, nuclear, and residential projects. 3G | Contact's provides services in Architecture, Engineering, Project/ Construction/ Development Management. In 2015, 3G was awarded the BID Century International Quality Gold Quality award in Geneva, Switzerland for the high quality services 3G provides.



EDUCATIONAL

THE GOLDEN DOOR OF FREEDOM

3G | Contects believes that education is the most powerful tool a person can wield. With it, humanity has achieved incredible feats and because of it, we push the boundaries of what is possible each and every day. 3G | Contects is dedicated to designing and creating an educational atmosphere in our offices and workplaces that transcends how we look at education. Because of this devotion to the acquisition of knowledge, our designers, architects, and engineers view schools and universities in a different light than the average person. Where others see an entrance to a school, we see a golden door that liberates the mind and the spirit.

ADEC Schools



ADEC KG's



UAEU Science Park



HCT Innovation Center



ADEC 3,000

Student K12- School

Abu Dhabi, UAE

In an attempt to standardize the designs and raise the standards of education in Abu Dhabi, ADEC decided to develop 6 new schools for 3,000 students each to be built in various locations in the Emirate; therefore, conducted a design competition for their new prototype schools amongst the most qualified educational and specialized A/E design firms and selected 3G | Contexts as the best design.

Location:	6Locations in the Emirate of Abu Dhabi
Start Date:	February, 2015
Completion Date:	Ongoing
Scope of Service:	A/E Design
Owner:	Abu Dhabi Education Council
Operator:	Abu Dhabi Education Council
Total Area:	258,000 m2
Total Cost (US\$):	420,000,000 (6 Schools @ \$ 70M /School)



ADEC 3,000
Student K-12 School
Abu Dhabi, UAE



ADEC 3,000
Student K-12 School
Close Shot





ADEC 3,000 Student K-12 School

Close Shot



ADEC 3,000
Student K-12 School
Eye Level View



ADEC 3,000
Student K-12 School
Eye Level View



ADEC 720 Students Kindergarten

Abu Dhabi, UAE

In an attempt to standardize the designs and raise the standards of education in Abu Dhabi, ADEC decided to develop 5 new KGs for 720 students each to be built in various locations in the Emirate; therefore, conducted a design competition for their new prototype KG amongst the most qualified educational and specialized A/E design firms and selected 3G | Contexts as the best design.

Location:	5 Locations in the Emirate of Abu Dhabi
Start Date:	February, 2015
Completion Date:	Ongoing
Scope of Service:	A/E Design
Owner:	Abu Dhabi Education Council
Operator:	Abu Dhabi Education Council
Total Area:	40,000 SM (5 KGs @ 8,000 SM/KG)
Total Cost (US\$):	65,000,000 (5 KGs @ \$ 13M /KG)



ADEC 720 Students Kindergarten

Abu Dhabi, UAE



EYE VIEW PERSPECTIVE 1



EYE VIEW PERSPECTIVE 2

ADEC 720 Students Kindergarten

Close - Up View



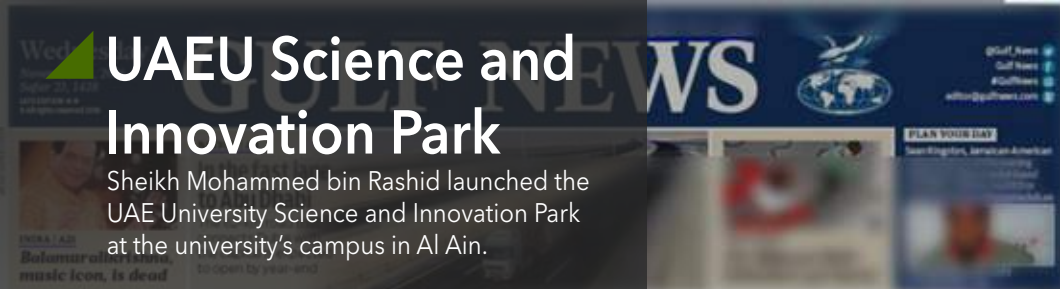
UAEU Science and Innovation Park

Al-Ain, UAE

One of the critical focus areas of the leadership of the UAE federal government has been on innovation; therefore, they selected UAEU to house the new world class innovation science, research, and technology park at the university main campus in Al Ain. 17 types of research and their support facilities are included on the 600,000 SM parcel of land.

Location:	Al Ain, UAE
Start Date:	October, 2015
Completion Date:	Ongoing
Scope of Service:	A/E Design and Supervision
Owner:	UAE Federal Government
Operator:	UAE University (UAEU)
Total Area:	156,000 SM
Total Cost (US\$):	Confidential





Sheikh Mohammed bin Rashid during the inauguration of the Science and Innovation Park at the UAE University, yesterday.

New Science and Innovation Park to advance research

We, as a leadership, believe in our youth's capabilities, Mohammad says

ALAIN

His Highness Sheikh Mohammed bin Rashid Al Maktoum, Vice-President and Prime Minister of the UAE and Ruler of Dubai, yesterday inaugurated a Science and Innovation Park at the UAE University in Al Ain. The park is a part of a kind research hub and one

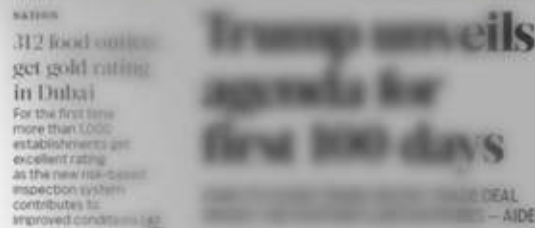
dest innovation incubator in the region and the world.

"We, as a leadership, believe in our youth's capabilities and passion to ensure the progress of their country and strengthening its global position in various domains. We realize that Emirati youth will become the source of our attention and sustained support that will lead them to a brighter future," he said. Sheikh Mohammed bin Rashid Al Maktoum, Dubai Crown Prince, said that the park will be a hub for research and innovation, and will be a source of inspiration for the youth of the UAE.

Inside



Drives to ensure sustained progress in driving future days ago. Government should ensure that the park is a source of inspiration for the youth of the UAE.



MIDDLE EAST

1,000 Iran soldiers killed in Syria war

It is a major increase in the reported death toll from just four months ago, when the Islamic Republic announced that 400 of its troops had died in the conflict.

BARREKUKU

Successor of Rashed has the shoes on his

Thamir bin Abdulaziz Al Saud, the new crown prince of Saudi Arabia, is expected to inherit the throne from his father, King Abdullah.



المكتب الإعلامي
لحكومة دبي
GOVERNMENT OF DUBAI
MEDIA OFFICE



UAEU Science and Innovation Park

Aerial View



UAEU Science and Innovation Park

Main Entrance View



UAEU Science and Innovation Park

Main Entrance View 2



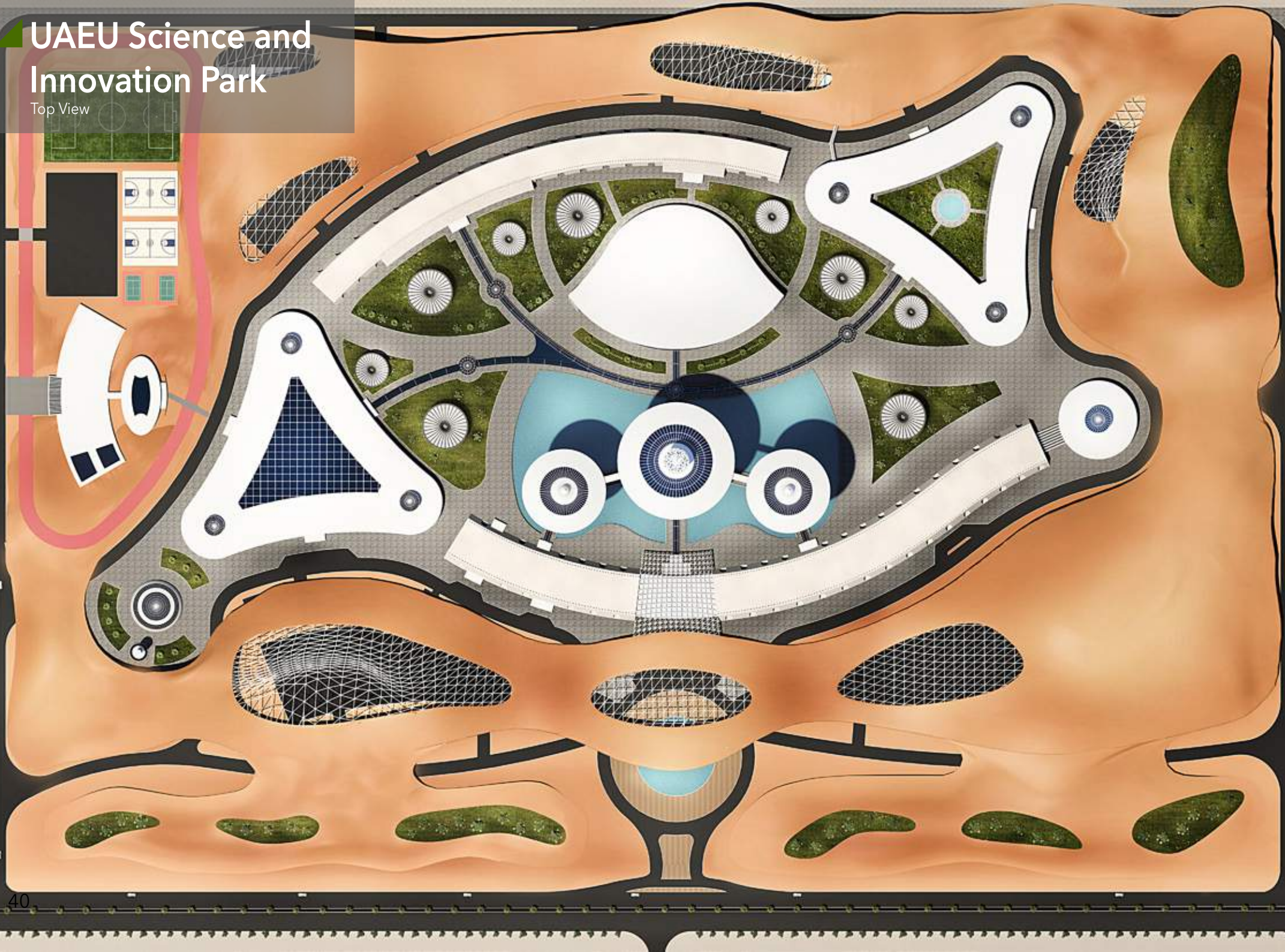






UAEU Science and Innovation Park

Top View



HCT INNOVATION CENTERS

Dubai, Sharjah and RAK

3G | Contects is under a two-year fast track design-build blanket contract with HCT to design and construct 14 innovation centers in various emirates. the scope includes fit-out work with HCT existing campuses to convert existing spcaes ranging between 2000 and 3000 sq.m. at each campus. the project pilot is 3 centers Dubai, Sharjah and Ras Al Khaimah

Location:	Dubai , Sharjah and RAK
Start Date:	July 2016
Completion Date:	Ongoing
Scope of Service:	Design / Supervision and CM
Owner:	Higher Colleges of Technologies
Operator:	HCT
Total Area:	2985 Sqm. Dubai 2775 Sqm. Sharjah 2764 Sqm . RAK
Total Cost (US\$):	Confidential









HCT Innovation Centers

Sharjah Women College



HCT Innovation Centers

Ras Al Khaimah Women College



HCT Innovation Centers

Ras Al Khaimah Women College



COMMERCIAL

CAPTURING THE COLLECTIVE IMAGINATION

3G | Contents and its leadership are always focused on maximizing quality. When it comes to the commercial world the trade-off of cost vs. quality is one in a constant tug-of-war. The efforts are to ultimately maximize value. This principle is what drives 3G | Contents and it is the same principle that drives commercial businesses. How can we maximize value? By maximizing buyer value. This is where 3G | Contents excels and because the commercial world is fueled by many of the same principles, 3G | Contents takes great pleasure in helping facilitate the commercial success of its Clients and their business and development ventures.

Dragon Oil



OMINVEST HQ



Dragon Oil Office and Recreation Facilities

Hazar, Turkmenistan

Dragon Oil is under a long term contract with the Government of Turkmenistan to explore for oil on and off-shore the country; therefore, Dragon Oil decided to develop two office buildings and one recreation facility for its staff.

3G | Contents was selected based on the best submitted design and was commissioned to complete the A/E design services.

Location:	Hazar, Turkmenistan
Start Date:	February, 2014
Completion Date:	Ongoing
Scope of Service:	A/E Design
Owner:	Dragon Oil
Operator:	Dragon Oil, Turkmenistan
Total Area:	24,000 SM (3 Buildings)
Total Cost (US\$):	22,000,000



Dragon Oil Office and Recreation Facilities

Street View



Dragon Oil Office and Recreation Facilities

Recreation Building - Night View



Dragon Oil Office and Recreation Facilities

Recreation Building - Aerial View



OMINVEST HQ

Muscat Hills

Muscat, Oman

For this project, the expertise of 3G | Contents Managing Director, Khalel Ismail was specifically sought out by OMINVEST. Known for his remarkable and innovative designs, the OMINVEST headquarters design was a direct result of his vision. 3G | Contents is responsible for A/E design and construction supervision for this project. The building consists of 7 floors and 2 basements for parking. The ground floor contains a retail area in a small mall. Five floors function as offices and while the sixth floor houses as an office penthouse to be utilized as Ominvest headquarters.



Location:	Muscat, Oman
Start Date:	February, 2015
Completion Date:	Ongoing
Scope of Service:	A/E Design & Supervision
Owner:	Ominvest
Operator:	Ominvest
Total Area:	40,800 SM
Total Cost (US\$):	33,000,000



OMINVEST HQ
Muscat Hills
Street View



OMINVEST HQ
Muscat Hills
Entrance View





UAEU EXPO

Pavilion 1st Prize Winner

Dubai, UAE

The project is a Thumbnail-inspired from the concept philosophy of EXPO 2020 Dubai. the building concept has also been inspired from the UAE desert, stars that covers the building envelope reflects the challenges and the culture of UAE. the building has a total area of 20,000 SqM including different types of spaces such as workshops, exhibition halls, training spaces, meeting rooms and incubation spaces for startup companies and advanced companies.

Location:	Dubai, UAE
Start Date:	January, 2017
Completion Date:	Ongoing
Scope of Service:	A/E Design & Supervision
Owner:	UAEU
Operator:	UAEU
Total Area:	20,000 SM
Total Cost (US\$):	43,000,000







RESIDENTIAL

WE DEVELOP A RESIDENCE TO BE A HOME

What is a residence? Is it where we sleep? Where we eat? Where we relax? Where we love? The answer is all of the above. It is a place that feels like home. Surrounded by not only the things we love, but more importantly the ones we love as well. A place of comfort and soothing. It is where we return, it is home. This idea that a residence should feel both unique and comfortable, is the driving force behind our acquisition and execution of residential projects. We want the end-user to truly feel they live somewhere that feels like home, while from a design standpoint is also unique to give that place a very special feeling.

The 3G | Contects team does not think of itself as a residential building consultant/ developer, but rather a creator of communities. The comfort and feel of a home goes beyond its walls, it requires all fundamental support facilities that are harmoniously designed and developed to facilitate for the safety, health, sustainability, and comfort of its inhabitants that serves the end users and the developers alike.

Riyadh Residential Building



LINK Residential Building



Khalidya Waterfront



Residential Building Development



Al-Bayt 58

Residential Development

Riyadh, KSA

Each of the two towers has 2 basements for parking, a ground floor with restaurants, café, retail, and 40 floors of residences. The residences vary from one to three bedroom apartments and duplexes totaling 904 units. A few conceptual designs were generated to accommodate the preference of the client. The first design is modern and unlike most other buildings of its type. While the contemporary look fits better in the aesthetic of the surrounding buildings and serves as a staple of recent housing projects across the Middle East.

Location:	Riyadh, KSA
Start Date:	March, 2014
Completion Date:	Ongoing
Scope of Service:	A/E Design & Supervision
Owner:	Al-Bayt Real Estate Development
Operator:	Al-Bait Facility Management
Total Area:	186,000 SM
Total Cost (US\$):	148,800,000



Khalidiya Waterfront Development

Abu Dhabi, UAE

This project was a metaphor for the harmonious relationship between the coastal sand and the waves of the sea. 3G | Contexts responsibilities were that of architectural and engineering design. The Project consists of two basements for approximately 1,000 parking spaces. The ground floor contains retail and public facilities, and the podium has an infinity pool overseen by 14 floors of apartments.

Location:	Abu Dhabi, UAE
Start Date:	April, 2014
Completion Date:	Ongoing
Scope of Service:	A/E Design
Owner:	Sheikh Mohammed Bin Khalid
Operator:	MBK Development
Total Area:	60,000 SM
Total Cost (US\$):	96,000,000



Khalidiya Waterfront Development

Aerial View



Khalidiya Waterfront Development

View to Podium and Infinity Pool



Residential Building Development

Riyadh, KSA

The overall project contains nine buildings all with a ground + five floors each with typical floor layout plans. Each building is a mixture of twenty 3 to 4 bedroom apartments designed for Saudi family living. The project is part of a PPP between the KSA Ministry of Housing and private developers. 3G | Contacts designed the project to utilize "Tunnel Formwork" system.

Location:	Riyadh, KSA
Start Date:	February, 2014
Completion Date:	December 2015
Scope of Service:	A/E Design
Owner:	KSA Ministry of Housing
Operator:	Tamlik/Green Falcon
Total Area:	48,000 SM
Total Cost (US\$):	35,000,000



Residential Building Development

Street View



Residential Building Development

Street View



Residential Building Development

Plaza View



Al Raha Beach Residential Buildings

Abu Dhabi, UAE

The overall project contains two buildings with two different plots. Each building consists of 2 basements and ground floor + 11 typical floors. The main concept of the architectural mass is generated from extruding and inruling the structural grid which will result in forming the apartments balconies in addition to the shading.

Location:	Abu Dhabi, UAE
Start Date:	December 2016
Completion Date:	Ongoing
3G Scope of Service:	AE Design
Owner:	Link International Properties
Operator:	Link International Properties
Total Area:	21,000 SM
Total Cost (US\$):	22,000,000



Al Raha Beach
Residential Buildings
Street View



Al Raha Beach Residential Buildings

Swimming Pool / Aerial View



Al Raha Beach Residential Buildings

Abu Dhabi, UAE



The overall project contains two buildings with two different plots. each building consists of 4 basements and ground floor + 13 typical floors. the main concept of the architectural mass is generated from the building structural slabs by extending them to create balconies in different levels.

Location:	Abu Dhabi, UAE
Start Date:	December, 2016
Completion Date:	Ongoing
3G Scope of Service:	A/E Design
Owner:	Link International Properties
Operator:	Link International Properties
Total Area:	20,000 SM
Total Cost (US\$):	22,000,000

Al Raha Beach Residential Buildings

Street View



HEALTHCARE

HELPING KEEP YOU HEALTHY

As part of 3G | Contacts commitment to maximizing quality across industries, strategic alliances are formed wherever it is beneficial for both 3G and our partners. In healthcare 3G | Contacts works in a joint venture arrangement with Influence Healthcare International (IHI) to provide healthcare services that not only help to design and operate hospitals but that change the way we look at healthcare. Innovative healthcare solutions met with unmatched design expertise allow for 3G | Contacts-IHI to revolutionize the healthcare field to ensure people are better taken care of and that our greatest wealth, our health, is put in the best possible situation.

Capital Hospital



KSUEH



German Hospital



Arzanah



Dabouq Hospital



DaVita



ZMH - Abu Dhabi



ZMH - Al Ain

DaVita Dialysis Clinic Program

Across KSA

DaVita, one of the world's largest and leading renal care providers in efforts to expand and provide their life saving services in The Kingdom of Saudi Arabia, worked jointly with the Ministry of Health to create this program of 76 clinics across the KSA. Since The Kingdom of Saudi Arabia has been seeing a great deal of growth, along with it have come more people requiring high quality healthcare services such as dialysis centers. With over 15,000 patients across the kingdom, the demand needed to be met so that adequate services could be provided. 3G's excellent and award winning design and supervision services have enabled a smooth start-up and construction and/or fit out process.

In cooperation with DaVita, and due cultural differences between the Middle East and the USA, we developed design and operational manuals for DaVita operations in KSA and the Middle East.

Location:	Riyadh, KSA
Start Date:	March 2015
Completion Date:	Ongoing
3G Scope of Service:	A/E Design and Supervision
Owner:	DaVita
Operator:	DaVita
Total Area:	228,000 m2
Total Cost (US\$):	162,000,000



DaVita Dialysis Clinic Program



The new 67,000 m2 and support facilities general hospital building is on a site of 18,800 m2 located just off the Abu Dhabi Island past Al-Maqta Bridge. The staff housing building of 7,900 m2 is located on the same site behind the hospital which eases the staff mobility to and from the hospital.

Location:	Abu Dhabi, UAE
Start Date:	June 2014
Completion Date:	Ongoing
3G Scope of Service:	A/E Design, Project and Construction Management, and Medical and Healthcare Operations Support
Owner:	H.E. Hamad Suhail Al-Khaily
Operator:	3G-IHI Joint Venture
Total Area:	94,000 m2
Total Cost (US\$):	255,000,000



Capital Hospital

Entrance View



King Saud University Endowment Hospital

Riyadh, KSA

3G-IHI provided full medical and medical equipment planning, architecture, interior design and MEP engineering services to convert the existing shell and core medical building into a general hospital to serve the private community. The hospital includes a variety of patient room types including VIP rooms

Location:	Riyadh, KSA
Start Date:	March 2013
Completion Date:	2015
3G Scope of Service:	A/E Design Services
Owner:	King Saud University Endowment
Operator:	InterHealth Canada
Total Area:	40,800 m2
Total Cost (US\$):	110,000,000



German Hospital

Amman, Jordan

3G provided full medical and equipment planning, architecture and engineering services for this new hospital. The project is a general hospital and has a plot area of approximately 2,300 m² and a total built up area of 15,000 m². It is located in Amman, Jordan.

Location:	Amman, Jordan
Start Date:	November 2013
Completion Date:	On Hold
3G Scope of Service:	A/E Design, Construction
Owner:	North America Healthcare LLC.
Operator:	North America Healthcare LLC.
Total Area:	15,000 m ²
Total Cost (US\$):	27,000,000



Dabouq Hospital

Amman, Jordan

Dabouq hospital, A Project undertaken by 3G-IHI for Coasts International Corporation. The emergency department was designed to have zero waiting time to ensure that the patients receive immediate care. All design aspects included "Acuity Adaptability" to maximize the utilization of space and resources. Dabouq Hospital can handle full medical services with 100% space efficiency, a design goal for 3G-IHI.

Location:	Amman, Jordan
Start Date:	August 2015
Completion Date:	On Hold
3G Scope of Service:	Turn Key Services
Owner:	Coasts International Corporation
Operator:	3G-IHI
Total Area:	26,000 m2
Total Cost (US\$):	47,000,000



Zayed Military Hospital Expansion

Abu Dhabi, UAE

Given 3G's extensive healthcare experience and quality, UAE Military works bestowed upon 3G the great honor of working hand-in-hand to deliver this hospital expansion as a full turn-key project. From medical planning, medical equipment planning, design and construction completion, 3G carries the great responsibility to deliver this highly needed project in a short time for a great cause. The expansion contains three main sectors in a G+2 floor format. The sectors are an Emergency Department, a Burn Intensive Care Unit, and a Physiotherapy Department fit to handle the direst of emergencies.

Location:	Abu Dhabi, UAE
Start Date:	October 2015
Completion Date:	Ongoing
3G Scope of Service:	Turn-Key Services
Owner:	UAE Military Works
Operator:	UAE Military Works
Total Area:	4,800 m2
Total Cost (US\$):	Confidential



Zayed Military Hospital Expansion



Arzanah Medical Complex

Abu Dhabi, UAE

Significant modifications to the Interior Medical & Architectural functions, and MEP systems as a whole were completed for this "five star" specialized healthcare project due to a change in the use of multi-spaces including various clinics, patient rooms, physiotherapy, and VIP spaces.

Location:	Abu Dhabi, UAE
Start Date:	June 2015
Completion Date:	Ongoing
3G Scope of Service:	A/E Design & Supervision
Owner:	Mubadala, PJSC.
Operator:	HealthPoint, LLC.
Total Area:	30,000 m2
Total Cost (US\$):	Confidential



INFRASTRUCTURE

GREAT BUILDINGS AND SYSTEMS BEGIN WITH A GREAT INFRASTRUCTURE

Highways, roads, bridges, water supply and resources, wastewater management, electrical power generation and transmission, and the other elements that combine to make public and private works infrastructure are at the heart of any modern civilization. The ability to design these systems and manage their execution at the highest international standards is found in few entities. 3G has experience working on the design and project management of infrastructure works around the world. By combining the agile structure of the 3G organization, local regulations and the highest quality for execution of these works using the in-house, proprietary management tools, 3G is a one-stop consultant for infrastructure projects.

3G CONSULTANTS
INFRASTRUCTURE
PROJECTS

Jeddah Airport Site SAPL

In the infrastructure design of the residential complexes near the Jeddah Airport in the Kingdom of Saudi Arabia, 3G | Contects was responsible for the architectural and engineering design of buildings and of major and secondary infrastructure including roads and utility networks. 3G | Contects was also managing and performing the master planning peer review.

Location:	Jeddah, KSA
Start Date:	2012
Completion Date:	Ongoing
Scope of Service:	A/E Design
Owner:	Saudi Arabian Parsons Limited



Jeddah SAPL

In the infrastructure design of the residential complexes in Jeddah in the Kingdom of Saudi Arabia, 3G | Contexts was responsible for the architectural and engineering design of buildings and of major and secondary infrastructure including roads and utility networks. 3G | Contexts was also managing and performing the master planning peer review.

Location:	Jeddah, KSA
Start Date:	2012
Completion Date:	Ongoing
Scope of Service:	A/E Design
Owner:	Saudi Arabian Parsons Limited



Madinah SAPL

In the infrastructure design of the residential complexes in Madinah in the Kingdom of Saudi Arabia, 3G | Contexts was responsible for the architectural and engineering design of buildings and of major and secondary infrastructure including roads and utility networks. 3G | Contexts was also managing and performing the master planning peer review.

Location:	Madinah, KSA
Start Date:	2012
Completion Date:	Ongoing
Scope of Service:	A/E Design
Owner:	Saudi Arabian Parsons Limited



In the infrastructure design of the residential complexes in Riyadh in the Kingdom of Saudi Arabia, 3G | Contexts was responsible for the architectural and engineering design of buildings and of major and secondary infrastructure including roads and utility networks. 3G | Contexts was also managing and performing the master planning peer review.

Location:	Riyadh, KSA
Start Date:	2012
Completion Date:	Ongoing
Scope of Service:	A/E Design
Owner:	Saudi Arabian Parsons Limited



In the infrastructure design of Tabouk in the Kingdom of Saudi Arabia, 3G | Contacts was responsible for the architectural and engineering design of buildings and of major and secondary infrastructure including roads and utility networks. 3G | Contacts was also managing and performing the master planning peer review.

In the infrastructure design of Tabouk in the Kingdom of Saudi Arabia, 3G | Contacts was responsible for the architectural and engineering design of buildings and of major and secondary infrastructure including roads and utility networks. 3G | Contacts was also managing and performing the master planning peer review.

Location:	Tabouk, KSA
Start Date:	2012
Completion Date:	Ongoing
Scope of Service:	A/E Design
Owner:	Saudi Arabian Parsons Limited



Dammam SAPL

In the infrastructure design of the Dammam City in the Kingdom of Saudi Arabia, 3G | Contexts was responsible for the architectural and engineering design of buildings and of major and secondary infrastructure including roads and utility networks. 3G | Contexts was also managing and performing the master planning peer review.

Location:	Dammam, KSA
Start Date:	2012
Completion Date:	Ongoing
Scope of Service:	A/E Design
Owner:	Saudi Arabian
	Parsons Limited



INDUSTRIAL

MOVING THE WORLD FORWARD

3G has worked on numerous large scale industrial projects. From outfitting and retro-fit design implementation to designing facilities from the ground up on “green fields”, 3G will tackle any challenge faced in the industrial field. Our lead staff has American and Middle Eastern Board Certified Professional Engineers (PE) with comprehensive experience in distribution center systems and manufacturing facilities. From logistics automation to commissioning and project management, we are prepared to undertake nearly any industrial challenge. Our Professional Engineers (PE) and subject matter experts have extensive experience in the automation process and implementation with experience on projects the include Amazon, Wal-Mart, Walgreens, VF Jean wear, and numerous others. While 3G The following projects range from food processing to high speed bottling and will encapsulate the industrial experience and know-how of 3G.

3G has completed several industrial projects including full A/E design, supervision, project & construction management, and testing & commissioning of various manufacturing facilities and distribution centers.

KBZF- Warehouses



HSL



BRF



MDC



Subsidized Commodities Distribution Centers

Across UAE

Khalifa Bin Zayed Foundation is developing 25 distribution centers across all 6 Northern Emirates. The project contains 3 types of centers, major scale (9,000 m²), medium scale (6,000 m²) and minor at (4,500 m²). Each center includes a warehouse with an attached office building, mosque, and staff accommodation.

Location:	Various Locations in the 6 Northern Emirates in the UAE
Start Date:	January, 2015
Completion Date:	December 2018
3G Scope of Service:	A/E Design and Construction Supervision
Owner:	Khalifa Bin Zayed Foundation
Operator:	Abu Dhabi Cooperative
Total Area:	212,500 m ²
Total Cost (US\$):	Confidential



Subsidized Commodities Distribution Centers

Eye Level View



Subsidized Commodities Distribution Centers

Eye Level View



High Speed Line Water Bottling Factory

Al-Ain, UAE

This 72,000 bottles per hour high speed water bottling facility was designed and built to connect two existing building blocks by adding, and renovating to accommodate a new high speed water bottling line.

Location:	Al-Ain, UAE
Start Date:	March, 2014
Completion Date:	December 2014 (Completed)
3G Scope of Service:	A/E Design and Construction Management
Owner:	Agthia Group, PJSC
Operator:	Al-Ain Water
Total Area:	24,500 m ²
Total Cost (US\$):	9,500,000



Food Processing Facility, Brazilian Foods Company

KIZAD, Abu Dhabi, UAE

The Factory produces seven different types of food products including chicken (Sadia), hamburgers, and breaded chicken.

The fast tracked design was completed in 5 months from the Notice to Proceed (NTP), showcasing 3G's high quality work fast track projects.

Location:	KIZAD, Abu Dhabi, UAE
Start Date:	October, 2012
Completion Date:	December 2014 (Completed)
3G Scope of Service:	A/E Design
Owner:	Brazil Food Co. (BRF)
Operator:	Brazil Food Co.
Total Area:	54,600 m ²
Total Cost (US\$):	125,000,000



Food Processing Facility, Brazilian Foods Company

Aerial View



Mega Distribution Center and Frozen Bakery

Abu Dhabi, UAE

The Gulf States import about 85% of their basic food requirements. Since food commodities' prices are high in the emirates due to global inflation, the Abu Dhabi government undertook the Al Wathba food complex project as part of a plan to ensure long-term food security in the UAE.

Agthia is a publicly traded company with majority ownership by the Abu Dhabi Government and has been a continuous and loyal client to 3G since our first project with them in 2011.

Location:	Al-Wathba, Abu Dhabi, UAE
Start Date:	October, 2011
Completion Date:	June 2014 (Completed)
3G Scope of Service:	A/E Design
Owner:	Agthia Group, PJSC
Operator:	Agthia Group
Total Area:	32,260 m ²
Total Cost (US\$):	33,000,000





المجموعة الثالثة | كونتكتس
معماريون | مهندسون | مدراء مشاريع

3G | CONTECTS

Architects | Engineers | Project / Construction Managers

